

- City of Sycamore, IL
- 8 homesites on 42 acres
- Prime lots from 3 to 7 acres
- Conservation design
- Sycamore Schools
- Private road
- Well and septic
- Outbuildings permitted
- Horses allowed on 5 acres+ lots
- Zoned Rural Residential
- 5 acres of Natural Space
- Recreational Trail
- 2,200 SF minimum for 1 story house



Fowler Farm Estates

Enjoy the country lifestyle in a picturesque setting!

Exclusive and unique lots are now Available!

This is the first development of its kind in the area. It is a rare opportunity to build your upscale, custom home in a country setting on the west side of Motel Road north of Hwy 64 in the City of Sycamore. Lot size range from 3 to 7 acres in a **conservation minded design** of 8 lots. This rural community with a private road offers a natural common area and recreation path. Lots are available with mature trees, some adjacent to established forest, and one includes a pond. Native plantings and conservation management practices to be required on each lot.

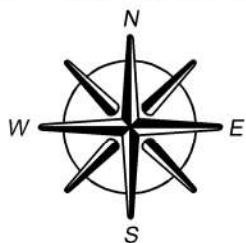
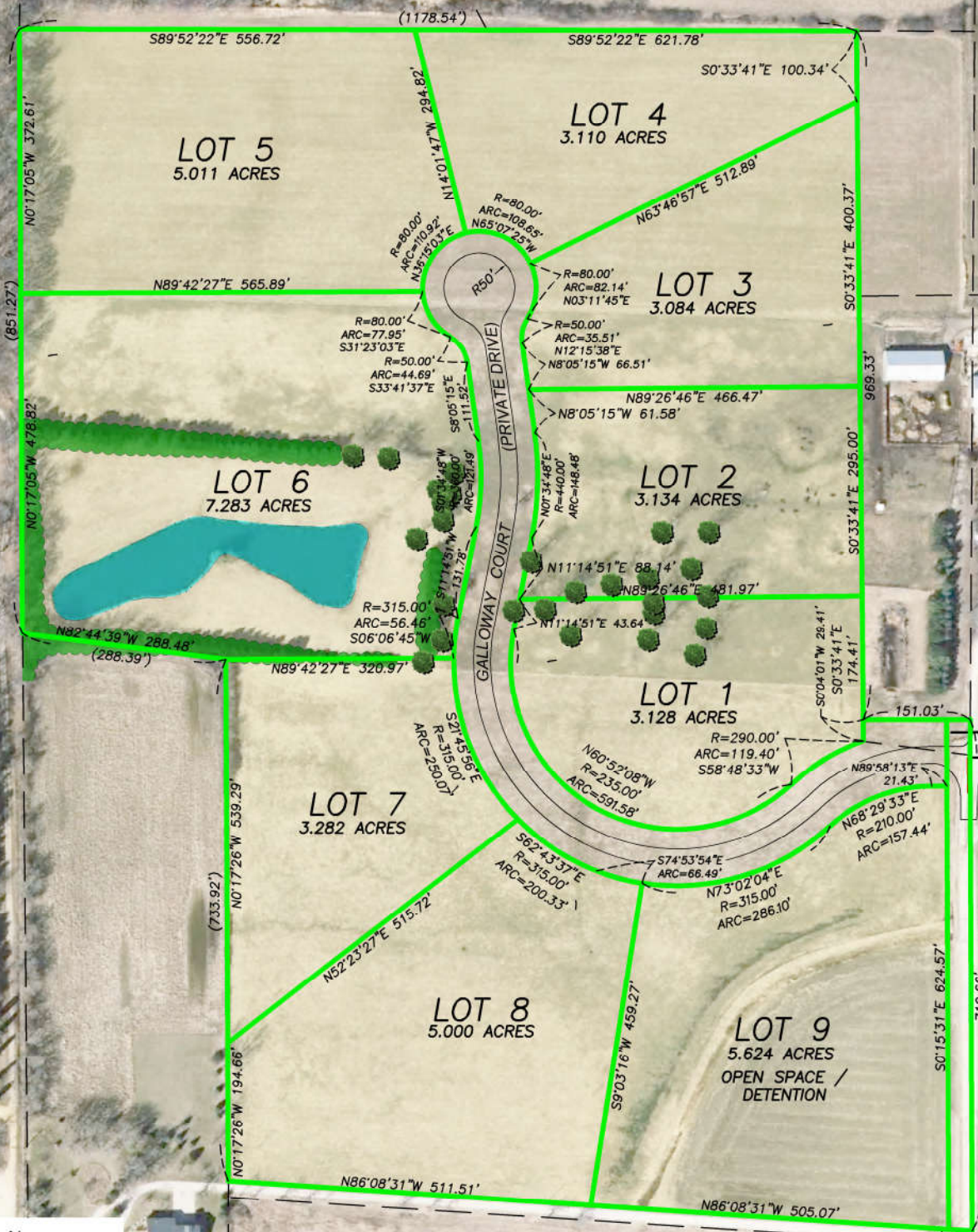


HOFFMAN
HR
REALTY
 LAND BROKERAGE

Richard Hoffman
 815 522-3255

Matt Hoffman
 815 501-3351
 Hoffman-realty.com

"FOWLER FARM ESTATES, P.U.D."
STEVEN G. GLASGOW'S ADDITION
TO THE CITY OF SYCAMORE
2019





Fowler Farm Estates

Enjoy the country lifestyle in a picturesque setting!

Lot 1.	1936 Galloway Ct. Partial trees	3.12 Acres	\$185,000
Lot 2.	1956 Galloway Ct. Partial trees	3.13 Acres	\$190,000
Lot 3.	1976 Galloway Ct.	3.00 Acres	\$210,000
Lot 4.	1996 Galloway Ct.	3.11 Acres	\$225,000
Lot 5.	1989 Galloway Ct. Adjacent to woods	5.01 Acres	SOLD
Lot 6.	1969 Galloway Ct. Pond, adjacent to woods	7.28 Acres	\$325,000
Lot 7.	1949 Galloway Ct.	3.28 Acres	\$220,000
Lot 8.	1929 Galloway Ct.	5.00 Acres	\$245,000
Lot 9.	Natural Space	5.64 Acres	

